

Continuing Care Safety Association

Reported PSIs, by year

Incident year ▲	Total #	% with injured persons
2019	4	25%
2020	40	75%
2021	44	41%
2022	125	93%
Total	213	77%

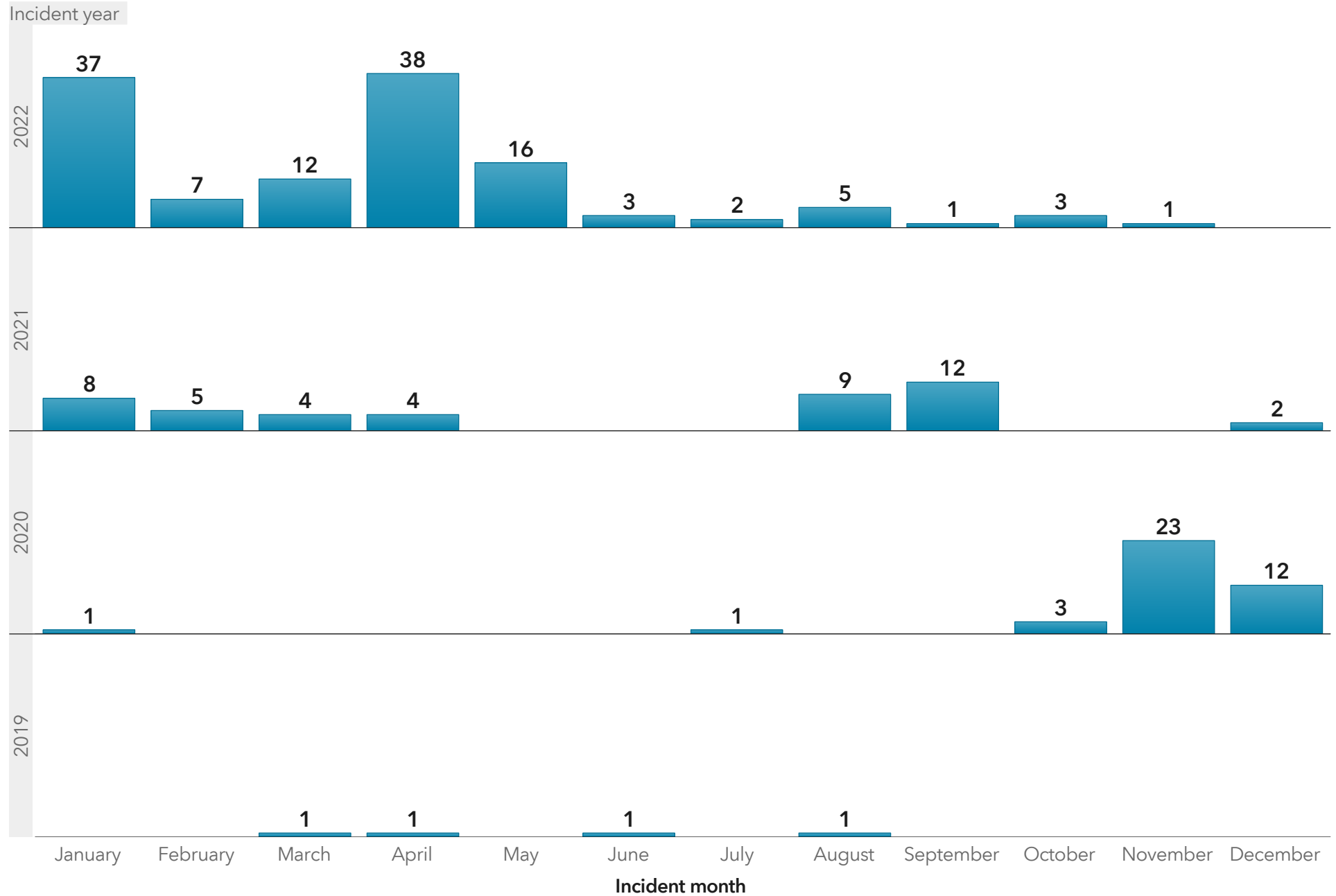
Employers involved in PSIs, by year

Incident year ▲	# unique employers reported
2019	4
2020	24
2021	24
2022	36
Total	60

Note: PSI reporting began on June 1, 2018. The definition was modified in December 2018, as such this report only includes data from January 2019.

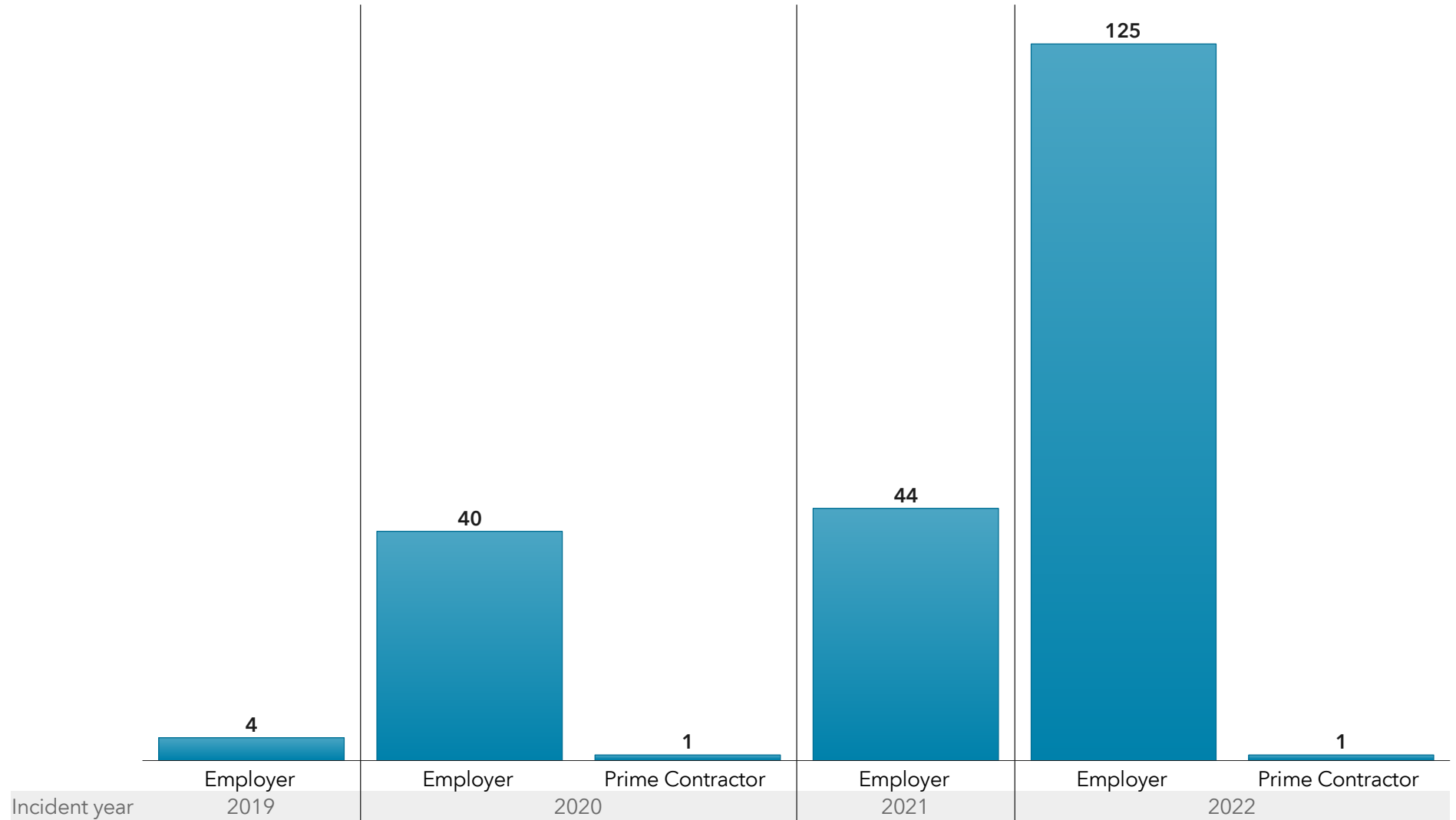
PSIs overview

Number of PSIs, by incident month and year



Who is reporting

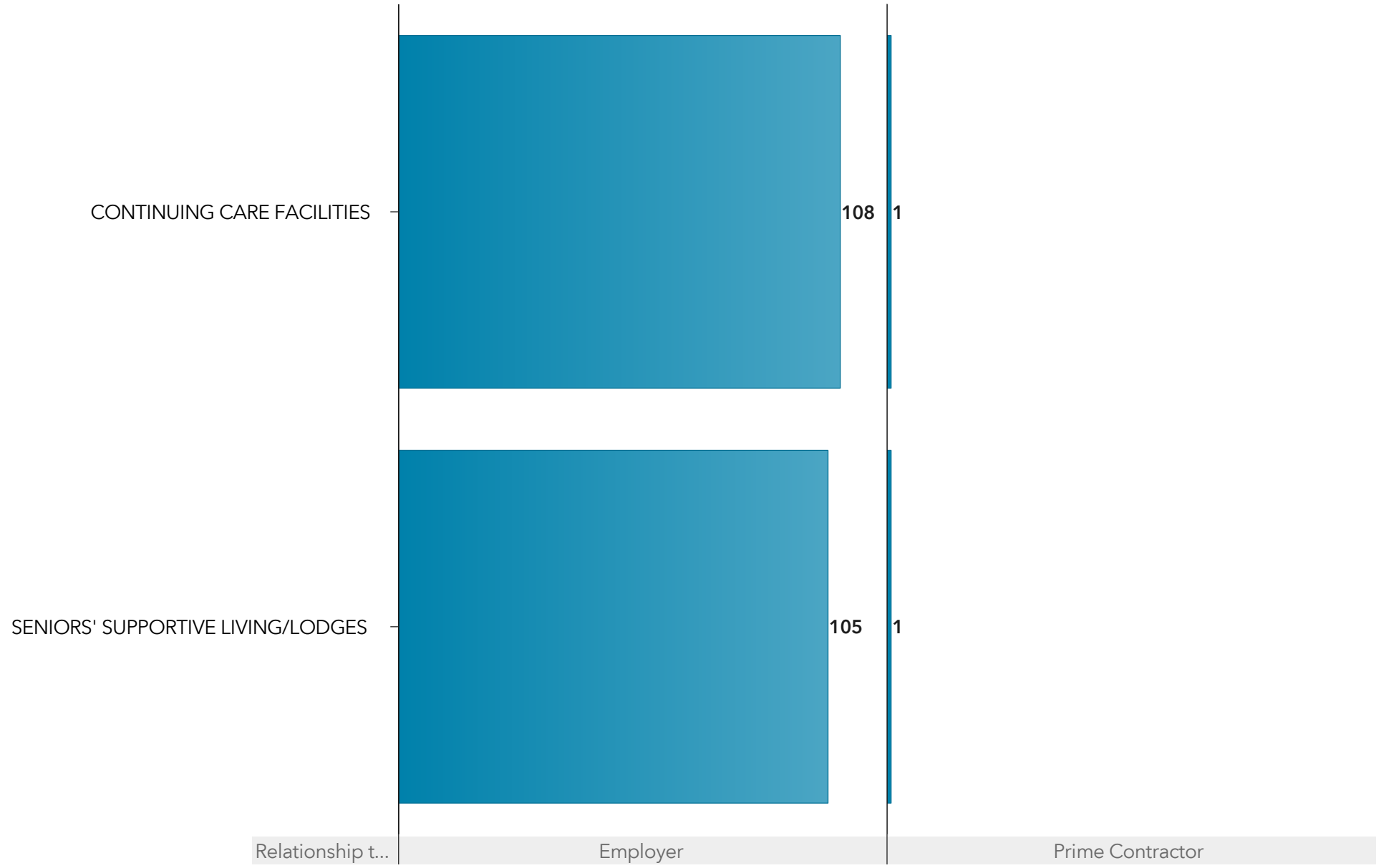
PSIs by reported employers and prime contractors, by year



Note: 2022 represents year-to-date data.

Industries reporting

Top 10: Industries reporting PSIs, by relationship to incident



Note: Total may not represent all incidents reported. For some incidents the WCB industry was not reported.

Type of incident (overview)

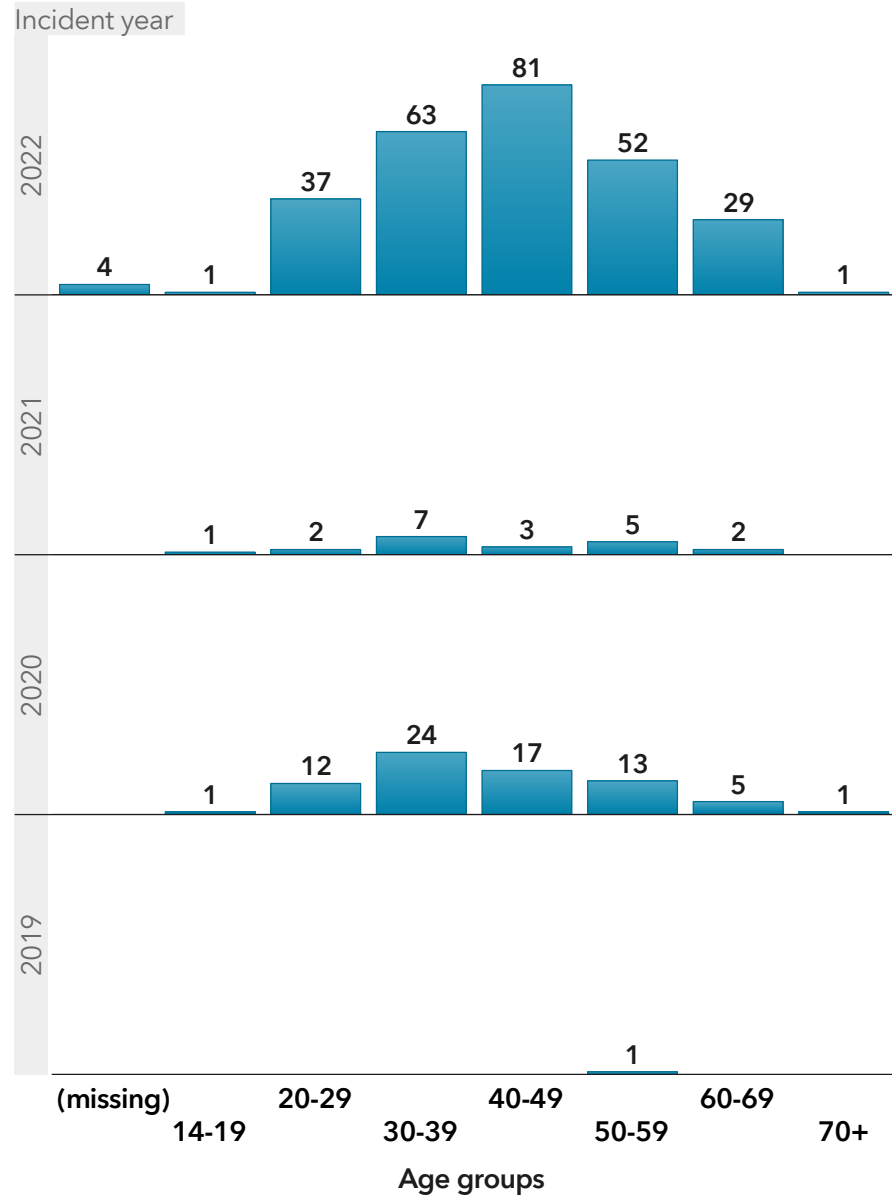
Top 10: PSIs by reported incident type, by year



Note: 2022 represents year-to-date data.

Injured person (overview)

Age distribution of PSI injured persons, by year



Number of PSI injured persons

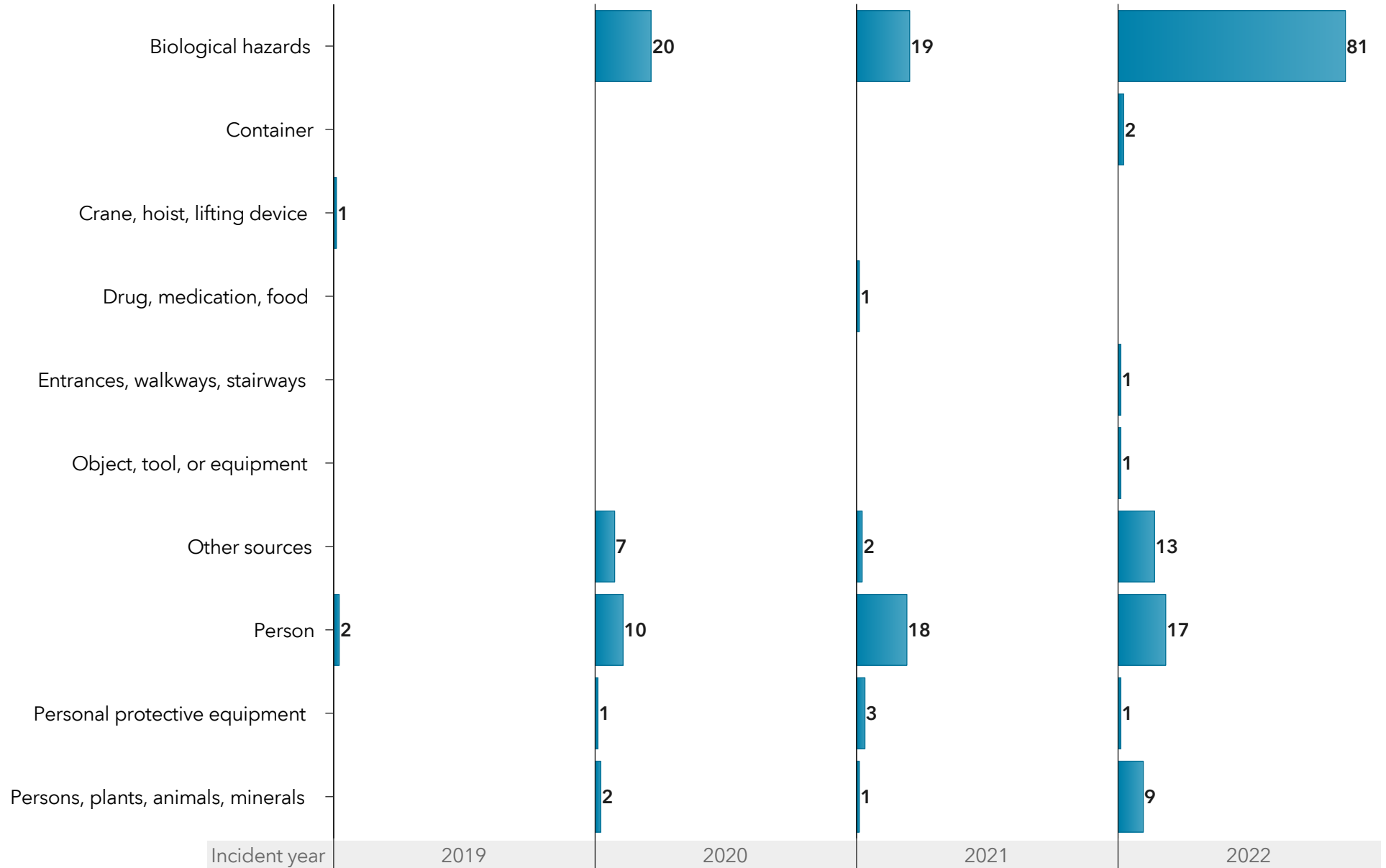


Incident year ▲	Injured workers	Injured non-workers	Total #
2019	1	0	1
2020	68	5	73
2021	20	0	20
2022	263	5	268
Total	352	10	362

Note: 2022 represents year-to-date data.

Source of incident (overview)

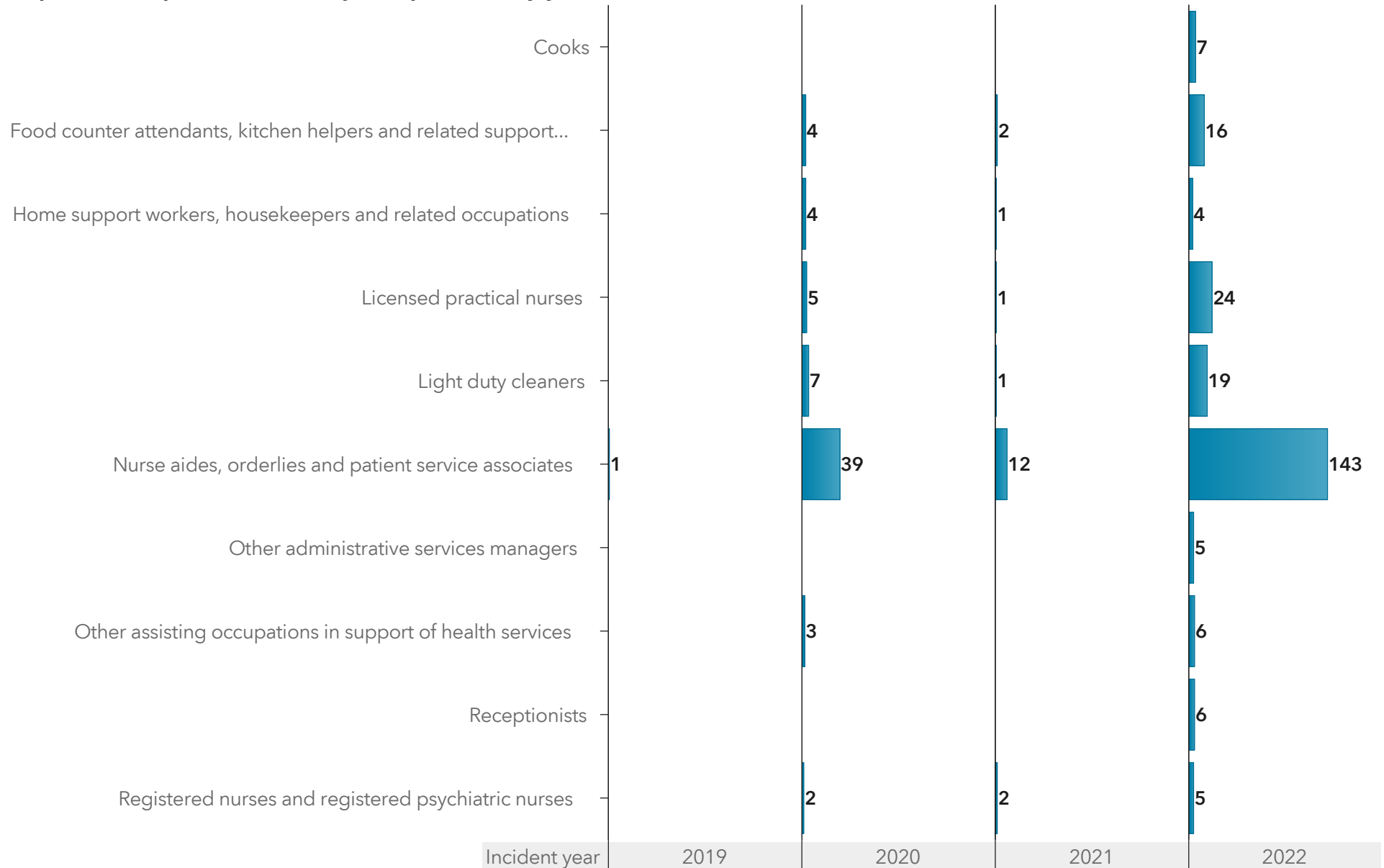
Top 10: PSIs by reported source of incident, by year



Note: 2022 represents year-to-date data.

Occupations

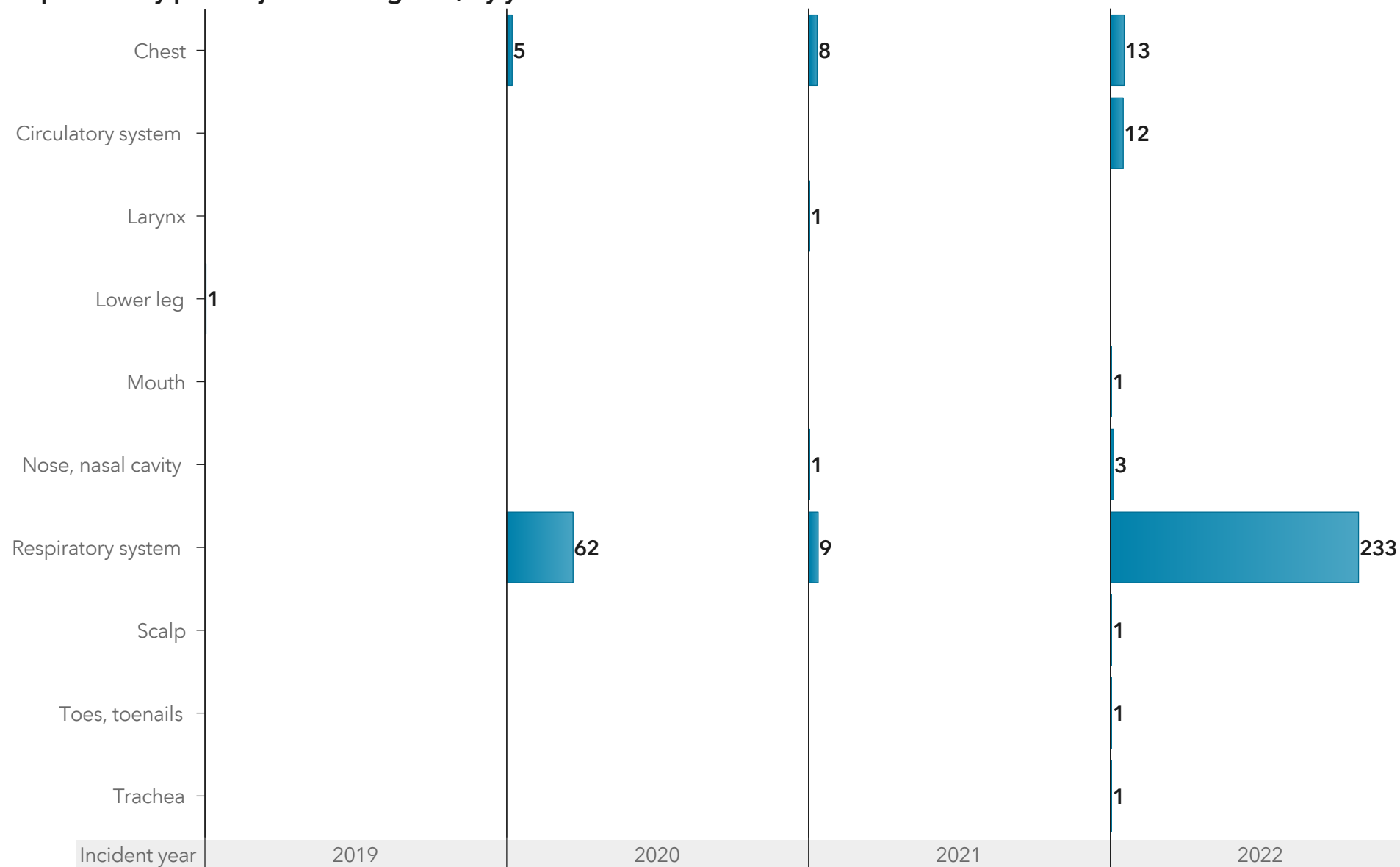
Top 10: Occupations of PSI injured persons, by year



Note: 2022 represents year-to-date data.

Part of body injured

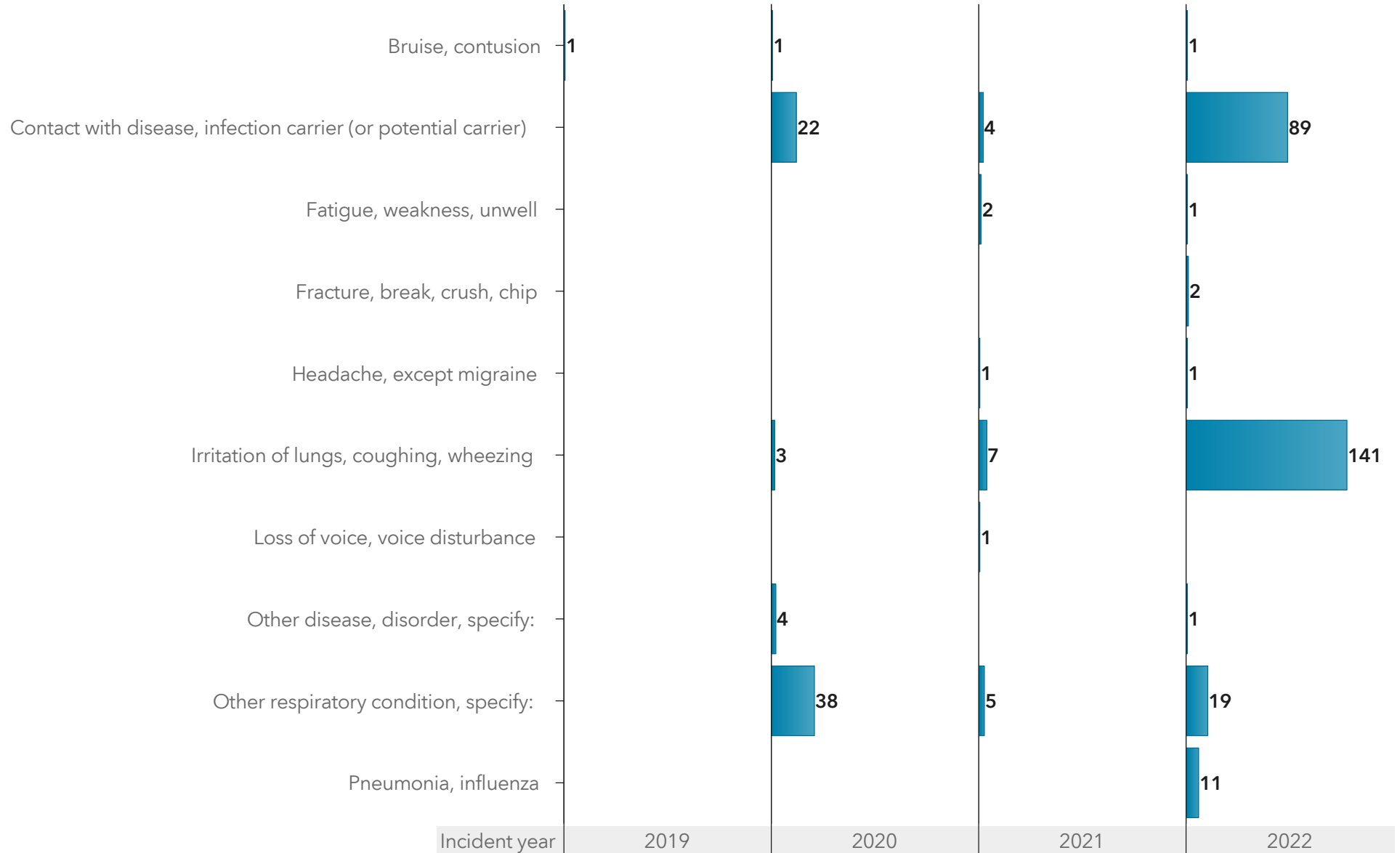
Top 10: Body parts injured during PSIs, by year



Note: A person could have multiple injuries reported.
2022 represents year-to-date data.

Type of injury (Overview)

Top 10: PSIs by type of incident reported, by year



Note: A person could have multiple injuries reported.
2022 represents year-to-date data.

Corrective actions



Corrective actions reported by type of PSI

Incident - category ▲	Eliminated hazard	Substituted equipment	Engineered control	Changed policy	Provided PPE	Provided training	Provided re-training	Other
Assaults, violent acts, harassment	2	0	0	0	0	0	1	2
Caught, contact or struck with object, tool, equipment	2	0	2	0	1	2	1	0
Exposure - harmful substance (e.g. toxin, gas, poison, chemical)	49	5	66	45	119	46	110	40
Fires and explosions	1	0	0	0	0	0	0	0
Total	54	5	68	45	120	48	112	42

Note: More than one corrective action can be taken per PSI. Provided re-training option became available on February 11, 2020 .
PPE = personal protective equipment

Detailed information tables

*Note: 2022 represents year-to-date data.
Excludes missing data*

Type of incident (detailed)

Type of PSIs, by year

Incident year ▲		2019		2020		2021		2022		Total	
Incident - category ▲	Incident - details ▼	Total #	% by year	Total #	% by year	Total #	% by year	Total #	% by year	Total #	% by year
Assaults, violent acts, harassment	Threat or verbal assault	1	25%	1	1%	2	1%
	Assault or violent act by person	1	25%	1	3%	.	.	1	1%	3	1%
Caught, contact or struck with object, tool, equipment	Contact or struck with object, tool, equipment	1	25%	2	2%	3	1%
	Caught in or between object, tool, equipment	1	1%	1	0%
Exposure - harmful substance (e.g. toxin, gas, poison, chemical)	Other harmful substance exposure, specify:	1	2%	.	.	1	0%
	Inhalation of substance	1	25%	1	0%
	Exposure to infectious disease/illness (eg. COVID, SARS)	.	.	1	3%	1	0%
	Exposure to infectious disease or illness (e.g. COVID, SARS)	.	.	32	80%	38	86%	118	94%	188	88%
	Contact with skin or exposed tissue	.	.	6	15%	4	9%	2	2%	12	6%
Fires and explosions	Fire	1	2%	.	.	1	0%
Total		4	100%	40	100%	44	100%	125	100%	213	100%

Sources of PSIs, by year



Incident year ▲		2019		2020		2021		2022		Total	
Source - category ▲	Source - details ▲	Total #	% by year	Total #	% by year	Total #	% by year	Total #	% by year	Total #	% by year
Biological hazards	Bacteria	.	.	2	5%	1	2%	3	2%	6	3%
	Bodily fluid, substance of person	.	.	11	28%	13	30%	20	16%	44	21%
	Infectious, parasitic agent	.	.	7	18%	5	11%	58	46%	70	33%
Chemical or harmful substance	Oxygen, oxygen compound	1	25%	1	0%
Container	Container - non-pressurized	1	1%	1	0%
	Container - pressurized	1	1%	1	0%
Crane, hoist, lifting...	Hoist	1	25%	1	0%
Drug, medication,...	Food product	1	2%	.	.	1	0%
Entrances, walkway...	Door	1	1%	1	0%
Object, tool, or equipment	Other object, tool, equipment, specify:	1	1%	1	0%
Other sources	Other source, specify:	.	.	7	18%	2	5%	13	10%	22	10%
Person	Client, customer	.	.	3	8%	11	25%	3	2%	17	8%
	Co-worker	1	25%	4	10%	.	.	5	4%	10	5%
	Health care patient, resident	1	25%	1	3%	2	5%	9	7%	13	6%
	Member of the public	.	.	1	3%	3	7%	.	.	4	2%
	Other person - not injured, ill worker, specify:	.	.	1	3%	2	5%	.	.	3	1%
Personal protective equipment	Other personal protective equipment, specify:	3	7%	.	.	3	1%
	Protective clothing	1	1%	1	0%
	Respirator	.	.	1	3%	1	0%
Persons, plants, animals, minerals	Co-worker of ill worker	.	.	1	3%	.	.	1	1%	2	1%
	Customer	.	.	1	3%	.	.	2	2%	3	1%
	Infectious, parasitic agent	1	2%	6	5%	7	3%
Total		4	100%	40	100%	44	100%	125	100%	213	100%

Type and source of PSIs (detailed)

Linkage between PSI sources and type of incident

Source - category ▲	Incident - details ▲	Total #	Total %
Biological hazards	Contact with skin or exposed tissue	12	6%
	Exposure to infectious disease or illness (e.g. COVID, SARS)	107	50%
	Exposure to infectious disease/illness (eg. COVID, SARS)	1	0%
Chemical or harmful substance	Inhalation of substance	1	0%
Container	Contact or struck with object, tool, equipment	2	1%
Crane, hoist, lifting device	Contact or struck with object, tool, equipment	1	0%
Drug, medication, food	Other harmful substance exposure, specify:	1	0%
Entrances, walkways, stairways	Caught in or between object, tool, equipment	1	0%
Object, tool, or equipment	Threat or verbal assault	1	0%
Other sources	Exposure to infectious disease or illness (e.g. COVID, SARS)	21	10%
	Fire	1	0%
Person	Assault or violent act by person	3	1%
	Exposure to infectious disease or illness (e.g. COVID, SARS)	43	20%
	Threat or verbal assault	1	0%
Personal protective equipment	Exposure to infectious disease or illness (e.g. COVID, SARS)	5	3%
Persons, plants, animals, minerals	Exposure to infectious disease or illness (e.g. COVID, SARS)	12	6%
Total		213	100%

Contact us

OHS Contact Centre (concerns, questions, reporting serious incidents)

Anywhere in Alberta

1-866-415-8690

Edmonton & surrounding area

780-415-8690

Deaf or hearing impaired

1-800-232-7215 (Alberta)

780-427-9999 (Edmonton)

OHS Surveillance (Data-related questions)

ohssurveillance@gov.ab.ca

Online Reporting Service (PSIs, mine or mine site incidents, non-injury serious incidents)

oirportal.labour.alberta.ca

Website

alberta.ca/report-potentially-serious-incidents.aspx

© 2023 Government of Alberta This material is for information only. The information provided in this material is solely for the user's information and convenience and, while thought to be accurate and functional, it is provided without warranty of any kind. The Crown, its agents, employees or contractors will not be liable to you for any damages, direct or indirect, arising out of your use of the information contained in this material. If in doubt with respect to any information contained within this material, or for confirmation of legal requirements, please refer to the current edition of the Occupational Health and Safety Act, Regulation and Code or other applicable legislation. Further, if there is any inconsistency or conflict between any of the information contained in this material and the applicable legislative requirement, the legislative requirement shall prevail. This material is current to 'Report date' . The law is constantly changing with new legislation, amendments to existing legislation, and decisions from the courts. It is important that you keep yourself informed of the current law. This material may be used, reproduced, stored or transmitted for non-commercial purposes. The source of this material must be acknowledged when publishing or issuing it to others. This material is not to be used, reproduced, stored or transmitted for commercial purposes without written permission from the Government of Alberta.

